

---

# RoomGuard™

## User Manual

---

**©2006 Audiotel International Ltd.**

Under the copyright laws, this manual may not be copied, in whole or part, without the written consent of Audiotel International Ltd.

Every effort has been made to ensure the accuracy of this manual. The instructions and descriptions are accurate at the time of publication. However, succeeding versions of the equipment and manuals are subject to change without notice. Audiotel assumes no liability for damages incurred directly or indirectly from errors, omissions or discrepancies between the equipment described and the manual.

If you have any comments or suggestions on improving this manual please contact Audiotel at the following address:

Audiotel International  
Corby Road  
Weldon  
CORBY  
Northants  
NN17 3AR

Fax: +44(0)1536 266711  
or Email us at: [marketing@audiotel-international.com](mailto:marketing@audiotel-international.com)

**AUDIOTEL**<sup>™</sup> is a registered trademark of Audiotel International Ltd

---

## Contents

<b>Contents .....</b>	<b>3</b>
<b>How to use this manual .....</b>	<b>4</b>
<b>Introduction to RoomGuard .....</b>	<b>5</b>
<b>What's in the sensor unit ? .....</b>	<b>6</b>
<b>Sensor Unit Indicators.....</b>	<b>7</b>
<b>Connections to the Sensor Unit .....</b>	<b>8</b>
<b>Getting Started.....</b>	<b>9</b>

---

## How to use this manual

This manual is divided into a number of sections. The following brief description shows the type of information presented in each section:

- |                                       |   |  |
|---------------------------------------|---|--|
| <i>Introduction to RoomGuard</i>      | - | brief description of what RoomGuard is and how it works.                       |
| <i>What's in the sensor Unit ?</i>    | - | what makes up a RoomGuard sensor   |
| <i>Sensor unit indicators</i>         | - | how can the RoomGuard sensor locally indicate an Alarm event.                  |
| <i>Connections to the sensor unit</i> | - | how to connect to a RoomGuard sensor.  |
| <i>Getting started</i>                | - | how to set up a basic system, install the license key and launch the software. |

*This manual is not exhaustive and is only intended to give the user an overview of the system and enough information to get the system set up and working.*

*The nature of the system means that the software is continually changing, for this reason the majority of instructions relating to the software are not covered within this manual.*

*The user is encouraged to refer to the on-line help files embedded within the software for current instructions and information.*

---

## Introduction to RoomGuard

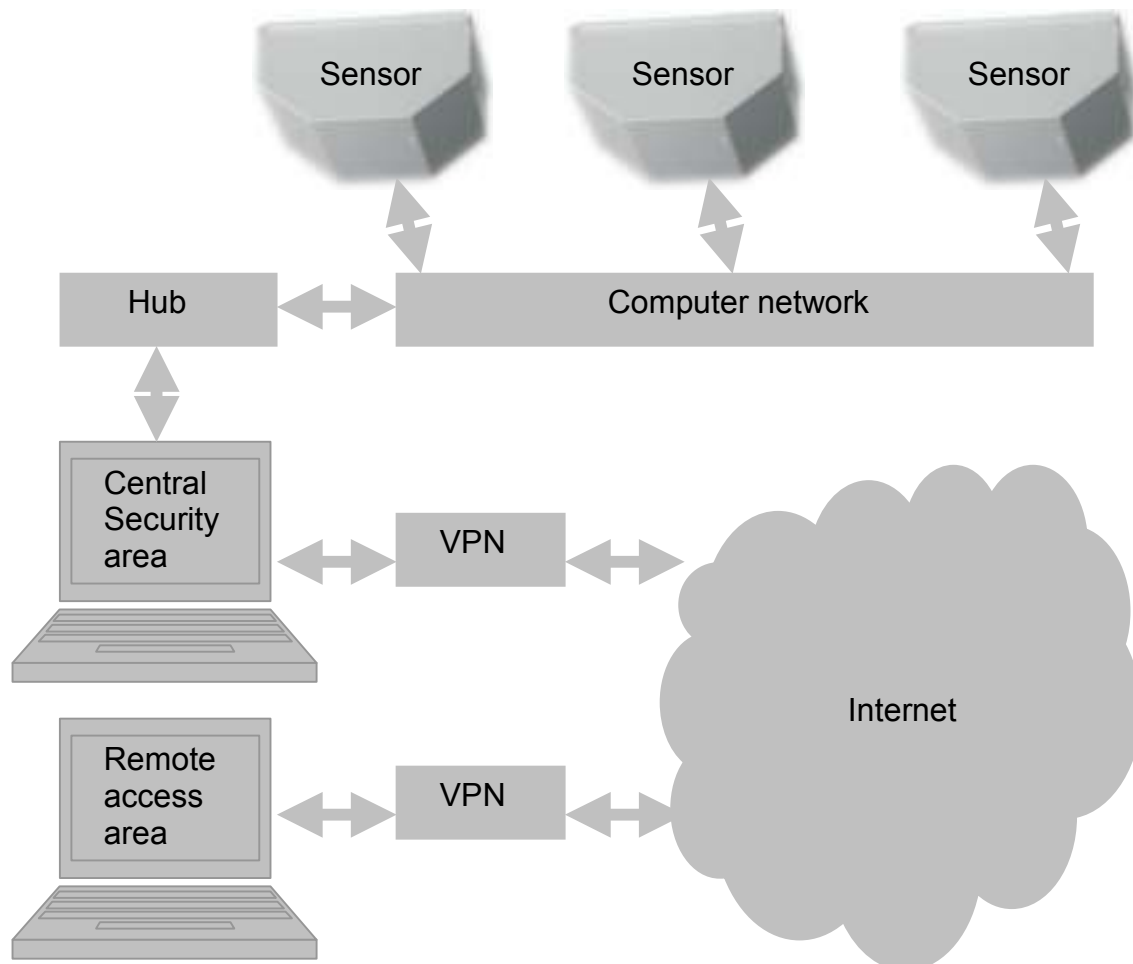
RoomGuard is a sophisticated radio monitoring alarm system designed to detect radio eavesdropping devices as they are introduced into protected secure areas.

The RoomGuard system comprises a number of RoomGuard sensor units which are positioned in the areas to be protected.

The sensor units are fully integrated radio detectors capable of detecting and identifying a large number of digital and analogue radio threats up to 10GHz.

The sensors are connected back via a computer network to a central security area, where, using the various RoomGuard software modules, system alarms and activity can be monitored.

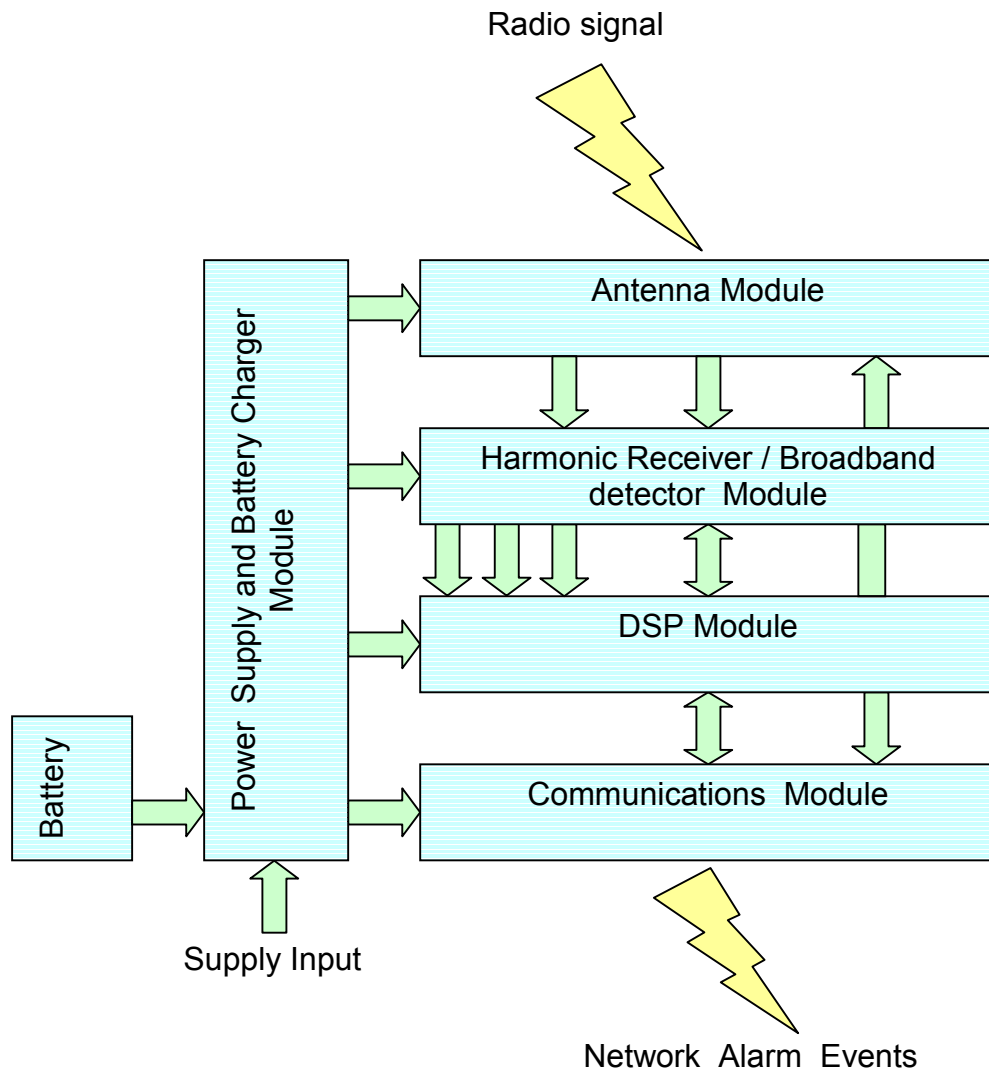
Further, the central security area PC can be connected securely to the internet to allow remote access to the RoomGuard system from anywhere in the world.



## What's in the sensor unit ?

The RoomGuard Sensor is a fully integrated harmonic radio receiver and broadband detector.

The sensor is constructed from a number of modules as shown below;



The sensor picks up radio signals via the antenna module, processes those signals via the Harmonic receiver / Broadband detector module, digitises and analyses the signals via the DSP module and communicates (locally and remotely) the output of the analysis as Alarm events via the communications module.

---

## Sensor Unit Indicators

The sensor unit has two types of Alarm indicator; the visual indicators and the Audio indicator.

These indicators are local to each sensor in the RoomGuard system and they can be individually enabled or disabled via the Support Package A software.

### Visual Indicators

There are three visual indicators on the sensor unit; a GREEN LED, a BLUE LED and a RED LED.

When visual indicators are enabled they will have the following meaning;

System OK:	GREEN LED flashing
External Supply fault:	GREEN LED ON (battery back up only)
Warning Condition:	BLUE & GREEN LED flashing
Alarm Condition:	RED, BLUE & GREEN LED flashing
Learn mode:	RED, BLUE & GREEN LED sequenced flashes

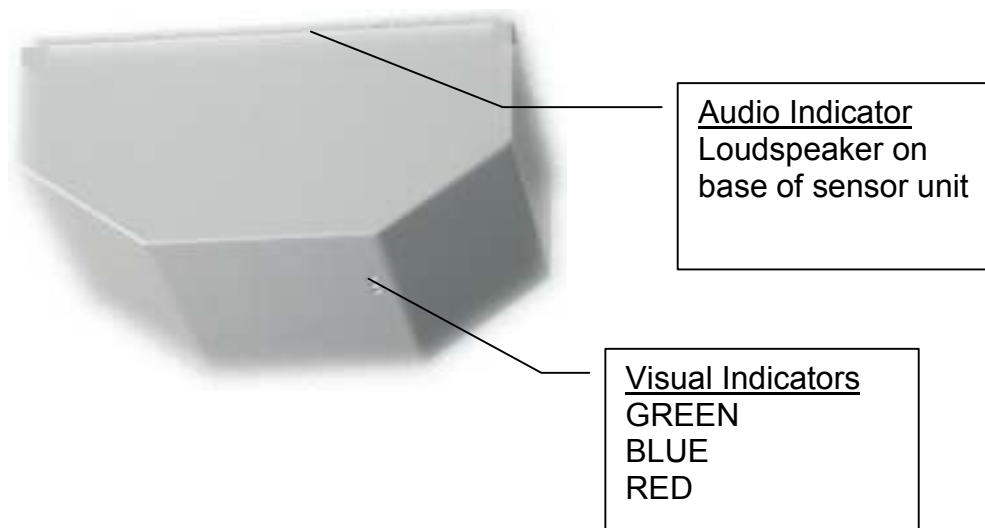
*Note: A Warning condition occurs when a signal is detected that is not high enough in level to break the Alarm condition.*

### Audio Indicators

There are two types of Audio indication; Learn Complete and Alarm.

When Audio indicators are enabled they will have the following meaning;

Learn Complete:	ten blasts of tone output
Alarm:	five blasts of tone output



---

## Connections to the Sensor Unit

There are three main connection ports available on the RoomGuard Sensor unit; the external supply input, the battery compartment and the network connection.

### External Supply input

The external supply input accepts a 2.5mm centre positive jack plug. This input will power the sensor unit and also (where fitted) charge the internal battery back up.

**WARNING:** This input should only be connected to the factory supplied external AC to DC adaptor.

### Battery Compartment

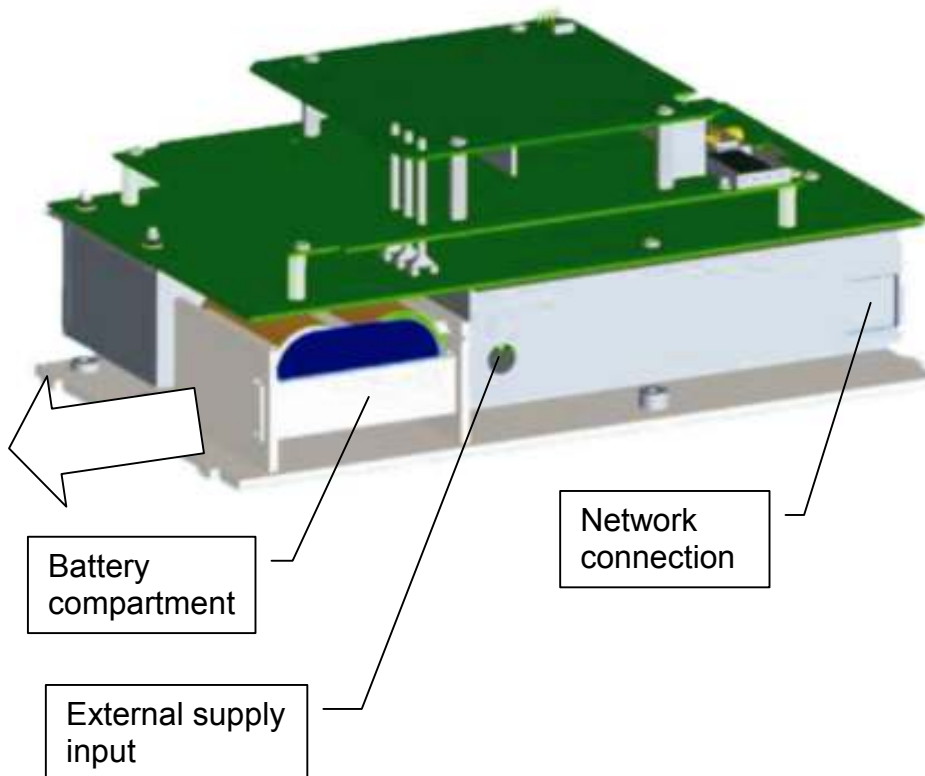
Where a back up battery is fitted to the sensor unit it can be accessed by removing the sliding battery door as shown below.

**WARNING:** Only factory supplied batteries should be inserted into this compartment.

### Network Connection

The sensor unit can be connected into standard CAT5 network cabling via the RJ45 Ethernet port.

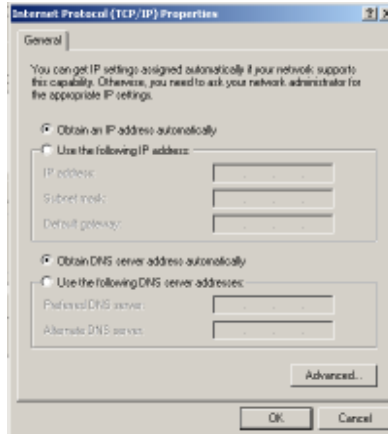
Indicators on the Ethernet port will show the status of the connection.



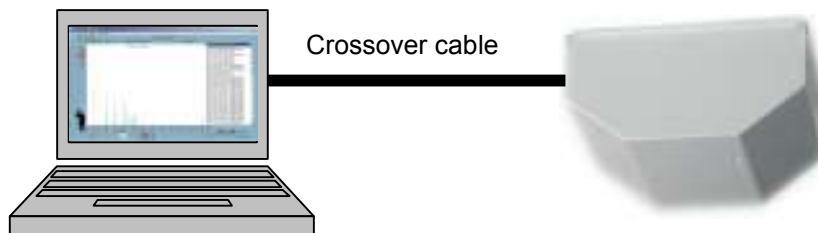
---

## Getting Started

The RoomGuard sensor is factory pre-configured for automatic IP. When directly connecting a PC to the RoomGuard sensor it too should be set to automatic IP.



*Note: A direct connection between the PC and the RoomGuard sensor will require use of a crossover cable.*



Once the RoomGuard sensor has been connected to the PC and powered up the software can be launched via Start > Programs > Guard Viewer > RoomGuard.

Once the software has started the user Login window will be displayed along with the Control Center window.



---

In the **Login** window type in your user name and password in the appropriate fields and click on the **Enter** button.

*Note: The default user name is **admin** and the default password is **admin**.  
For security this should be deleted once your account is set up.*

Should you wish to alter, add or delete a user name and password click on the **Manage Passwords** button.

### Manage user accounts



To create a new user account enter the new user name and password (twice) then click the **Create** button.

To remove a user account enter the user name and password (twice) then click the **Delete** button.

To alter a user name or password first delete the old account then create a new one.

*Note: Access level is for future use and should be left at 0.*

### Configure



Once you have logged in the next step is to enter your license key. Click on the Configure button in the Control Center window.



Then click on the Enter Key button.



Enter the key supplied by the Audiotel Support team and click OK.

At this stage you can also set a working directory where all the RoomGuard files will be stored.

Click on the Select Working Directory button.

Double click on the folder you wish to make the directory and then click on the **Select Cur Dir** button to select it.

*Note: A new folder can be generated by clicking the Create New Folder icon.*

## Alarm panel

Click the Alarm panel button on the Control Center window to start the system.

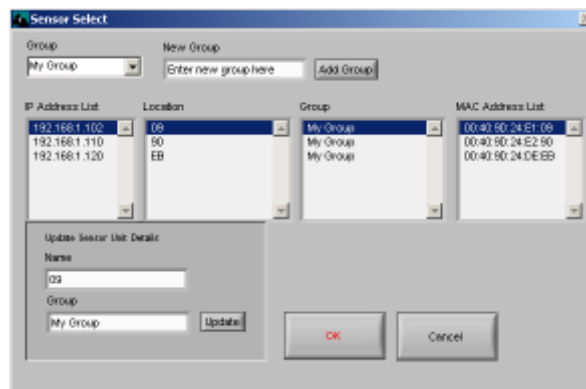


Next click the Find Sensor Units button.



The system will now search for valid RoomGuard Sensors which are connected to the PC.

Once the search is complete the Sensor Select window will be displayed.



Having discovered all the units this window will display the IP address for each unit along with the Location (user defined text string), group (user defined partition) and MAC address.

You can use this window to enter user defined text strings to give the RoomGuard sensor units meaningful names.

---

This is done by selecting the RoomGuard unit from the **IP Address List** and then entering a text string in the **Name** field of the **Update Room Guard Details** panel.

Clicking the **Update** button will then set the name for the selected RoomGuard sensor.

You can also use this window to partition RoomGuard units within your system into smaller groups.

Doing this will allow you to use the software to interrogate RoomGuard units in a particular area.

For example you could partition your RoomGuard system into a Ground Floor group and a First Floor group.

To set up a partition you should first enter the name of your new group in the **New Group** text field.

The new group can then be added to the **Group** list by clicking the **Add Group** button.

RoomGuard sensors can be partitioned into a group by first selecting the unit from the **IP Address List** and then entering the group name into the **Group** field in the **Update Sensor Unit Details** panel.

Selecting the group partition to display in the **Alarm Panel** is done by choosing the required group from the **Group** drop down list.

Once everything is set up in the **Sensor Select** window the **Alarm Panel** can be launched by clicking the **OK** button.



Clicking the Help button within the Alarm Panel will give more information on this display.

## Other options

Other options selectable from the Control Center are; Alarm Graphics, Off line Analysis and Alarm Trend.



## Alarm Graphics

The Alarm Graphics option allows the user to import a .jpeg or .bmp file depicting a floor plan of the area where the RoomGuard sensors are deployed.

The user can then position the sensor icons in context to give a simple graphical interface to the system.



Clicking the Help option within the Alarm Graphics window will give more information on this display.

## Off Line Analysis

The Off Line Analysis option allows the user to filter historical alarm events generated by the system to look for specific events.

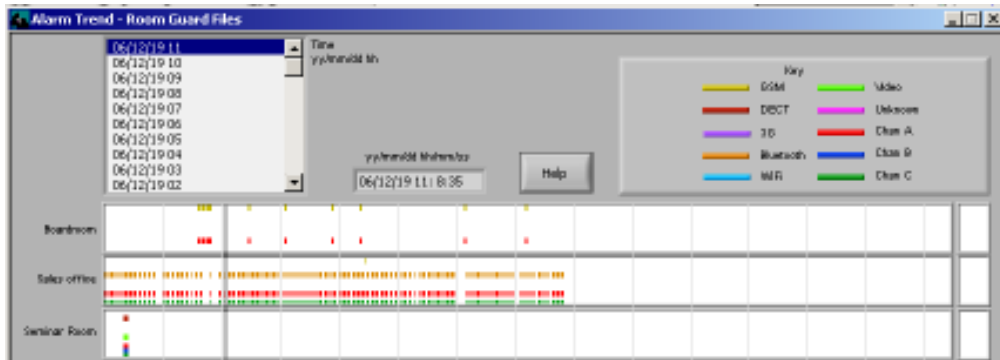


Clicking the Help button within this window will give more information on the display.

---

## Alarm Trend

The Alarm Trend option allows the user to visually interrogate the entire RoomGuard system for alarm trends using a chart recorder type display.



Clicking the Help button within this window will give more information on the display.